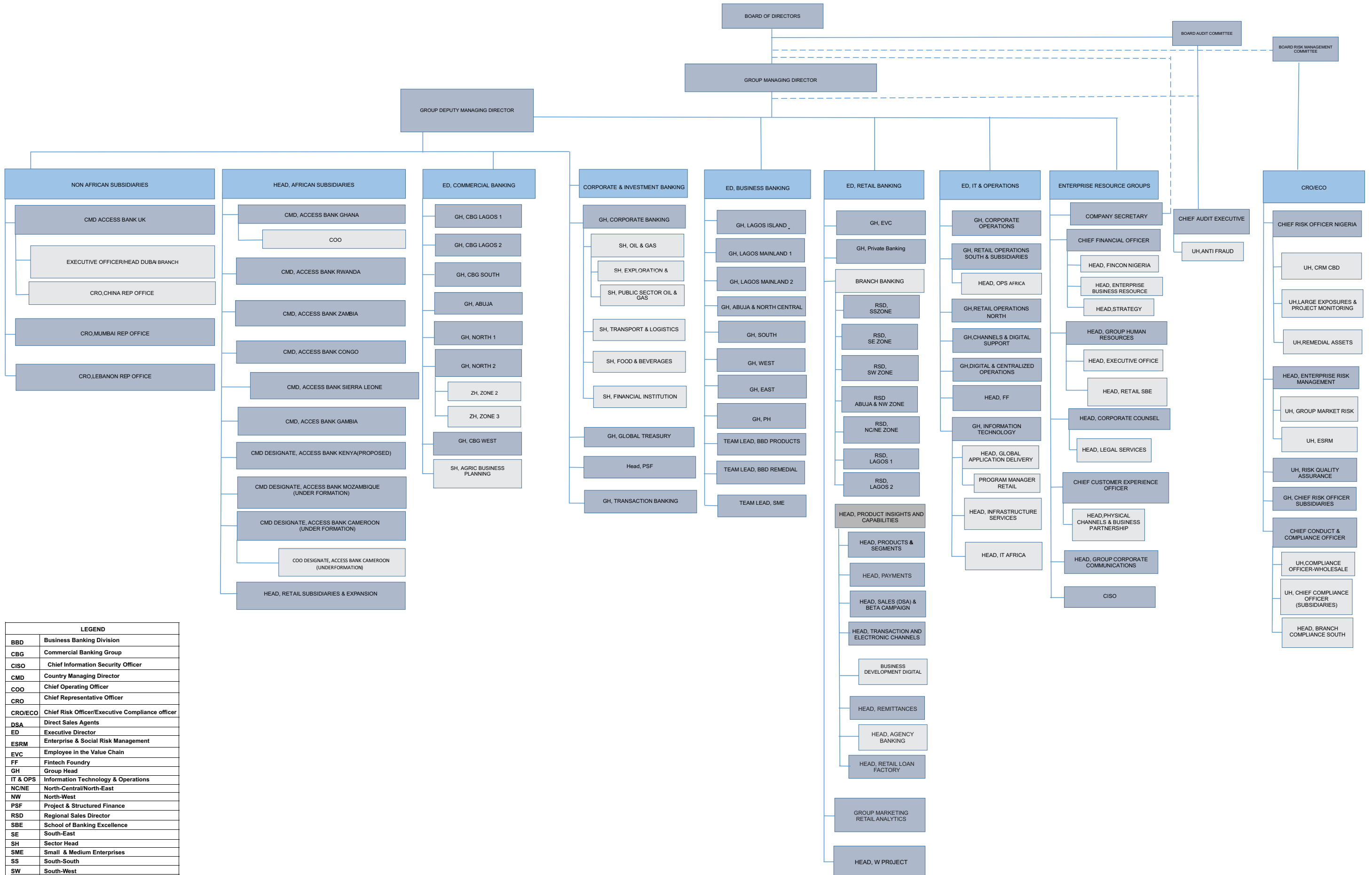


ACCESS BANK PLC (INDICATIVE ORGANISATIONAL STRUCTURE SHOWING ALL DIRECT REPORTS OF EDs, GROUPS, AGMs and ABOVE)



LEGEND	
BBD	Business Banking Division
CBG	Commercial Banking Group
CISO	Chief Information Security Officer
CMD	Country Managing Director
COO	Chief Operating Officer
CRO	Chief Representative Officer
CRO/ECO	Chief Risk Officer/Executive Compliance officer
DSA	Direct Sales Agents
ED	Executive Director
ESRM	Enterprise & Social Risk Management
EVC	Employee in the Value Chain
FF	Fintech Foundry
GH	Group Head
IT & OPS	Information Technology & Operations
NC/NE	North-Central/North-East
NW	North-West
PSF	Project & Structured Finance
RSD	Regional Sales Director
SBE	School of Banking Excellence
SE	South-East
SH	Sector Head
SME	Small & Medium Enterprises
SS	South-South
SW	South-West
TBH	To be hired
UH	Unit Head
W Project	Women Project
ZH	Zonal Head